

## 3.0 T MRI AT THE SPEED OF LIFE



### From the East

287 N. to Exit 13 (Route 28 West/Somerville) onto Union Ave. Follow Union Ave 1.5 miles to Somerset Medical Commons complex. Center is in Building #2 to the rear.

### From the West

Rt 22 East to Adamsville Road exit in Bridgewater. Right on Adamsville Road to Union Ave. (Route 28). Make right, go 1/4 mile to Somerset Medical Commons; complex on right. Make right turn onto Monroe Street, parking lot is on right. Our building is in the far corner.

### From the North

287 S. to Exit 9 (202/206) to Route 22 East. Continue as above "From West".

### From the South

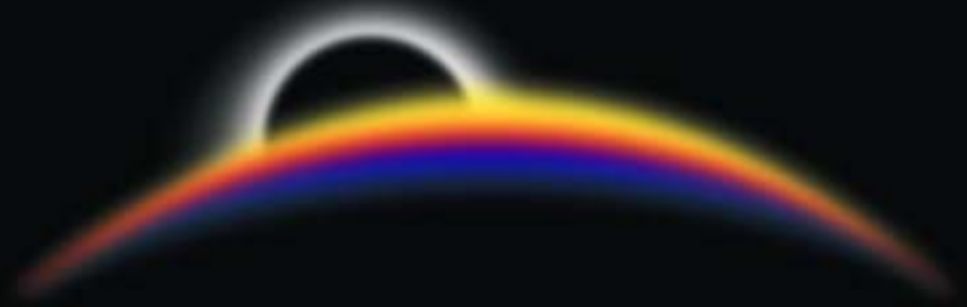
Rt 206 N. to Somerville circle to Route 22 East. Continue as above "From West".

[www.aradnj.com](http://www.aradnj.com)

**FOR MORE INFORMATION OR TO SCHEDULE AN  
MRI APPOINTMENT, CALL CENTRAL SCHEDULING:**

**732-968-5160**

The  
**FUTURE**  
of MRI has  
**ARRIVED**



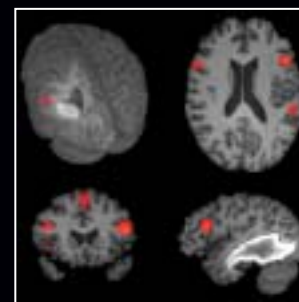
**3.0 T MRI NOW AVAILABLE AT  
ASSOCIATED RADIOLOGIST  
BRIDGEWATER OFFICE**

# Take a look!

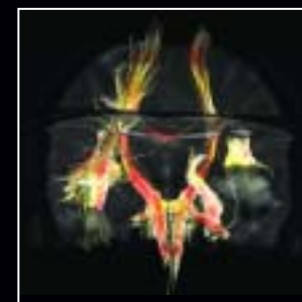
## GE Signa 3.0T High-Definition MRI with *EXCITE*\* Technology



Ovaries



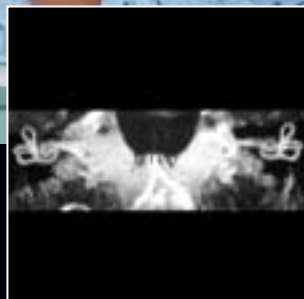
Brain Mapping - Speech areas



Diffusion Tractography - Left hemisphere abnormalities



Grey / White Matter Differentiation



Semi-Circular Canals



Normal Lumbar Spine



Phalangeal Tumor



Articular Cartilage Fissure



"Tricks" Angiography - Palmar arch, digital arteries



We are pleased to introduce the biggest technological breakthrough in MRI in more than a decade – the **Super High-Field 3.0T MRI system.**

- Superior image quality and resolution for diagnostic accuracy.
- Reduced exam time for patient comfort.
- Functional exams of brain, breast, and prostate.
- \*Excite / "Propeller" acquisition eliminates all motion artifacts in brain imaging.
- \*Excite / "Tricks" allows capture of real-time vascular flow, mimicking conventional angiography.

